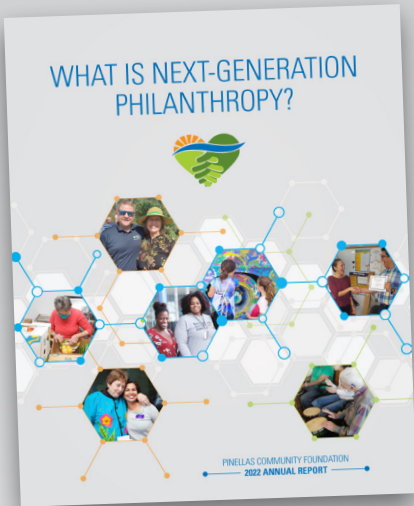


What Gives?

What Gives is dedicated to telling the inspirational stories of Pinellas County.



What Is Next Generation Philanthropy?

2022 ANNUAL REPORT

“What Is Next Generation Philanthropy?” embraces fresh perspectives, innovative strategies, and transformative solutions. At Pinellas Community Foundation, we recognize that the giving landscape is evolving rapidly, and it is crucial to adapt our practices to ensure the greatest possible outcomes.

The stories in the 2022 annual report underscore the power of creating positive change through the collaborative efforts of our community, fostering a culture of caring, and leveraging public-private partnerships to address the most pressing challenges facing our region.

[LEARN MORE](#)

PinellasCF.org/AnnualReport2022

Homeless Leadership Alliance Relocates Mobile Home Residents With \$250K ARPA Funds Through PCF and the City of Clearwater

5 Years Faster Initiative, Powered by American Rescue Plan Act Funding, Helps 38 Families Find New Homes

In an inspiring tale of community collaboration, the Pinellas Community Foundation’s (PCF) 5 Years Faster initiative, powered by ARPA funding through the City of Clearwater, played a pivotal role in enabling the Homeless Leadership Alliance (HLA) to execute a remarkable relocation project. In a mere 90 days, HLA successfully relocated 38 families displaced by the mobile home park closure. Marked by compassionate outreach, community events, and the development of strong relationships, HLA’s efforts provided stability and hope during a critical time. This project’s significance extends beyond mere statistics, as families have found newfound stability, regained custody of their children, embraced sobriety, and reconnected with their goals for the future. It serves as a reminder that addressing homelessness requires unified and empathetic action.

The PCF-HLA partnership resonates beyond this project. It underscores the mission to reshape the narrative surrounding homelessness and affordable housing. This collaboration isn’t just about rehousing; it’s about systemic change. By leveraging data, refining strategies, and fostering partnerships, PCF and HLA are not just alleviating homelessness, but addressing its root causes.

An HLA representative succinctly captures the essence of this partnership: “When you’re working on a short-term project, the goal is to collaborate and solve the problems. Through this collaboration we have with PCF, one of the best parts was, we were able to not just solve the problems, but develop best practices that can be used by all organizations going forward. I’ve worked with a lot of community foundations across the country, and I would say that PCF is not only the most cognizant about what is going on in their community, but they are truly one of the best collaborators that I have come across.”

At the core of this collaboration lies a transformative mission. The 5 Years Faster initiative, using ARPA funding passed by Congress in 2021, has already sprung into action, bringing a fresh wave of hope to communities that faced setbacks due to the pandemic. Through this initiative, PCF joins forces with local governments in Pinellas County and the cities of St. Petersburg and Clearwater to address a spectrum of needs from construction to mental health and serve as an inspiring model of how collective action, strategic collaboration, and compassion can ignite transformative change in our communities.

[READ MORE](#)

PinellasCF.org/5YearsFaster

Showcasing Impact

Countywide Tour Highlights Nonprofits

The first Pinellas Community Foundation (PCF) Operating Grants Bus Tour was a transformative experience that brought together the PCF Team, Board of Governors, community reviewers, volunteers, and community leaders for an intimate exploration of six nonprofit organizations across Pinellas County. These organizations received substantial two-year operating grants totaling over \$100,000, a testament to PCF's commitment to catalyzing positive change in the community.

The diverse array of awardees showcased the breadth of PCF's impact, including The Dysautonomia Project, Family Center on Deafness, Great Explorations, FEAST Food Pantry, Homeless Empowerment Program, and Artz 4 Life. The bus tour was a dynamic opportunity to engage with these organizations on a personal level, witnessing their missions come to life and experiencing the tangible impact of PCF's support.

By meeting these nonprofits where they operate and observing their missions in action, participants gained a profound understanding of the real-world impact of PCF's operating grants. The tour became a source of inspiration, fostering a deeper connection between stakeholders and the organizations driving positive change in the community. Thank you to our generous donors who have the forethought to fund today's challenges.



Donor Spotlight

Deborah Schuler



What is the history of your partnership with Pinellas Community Foundation?

When COVID-19 struck and people were out of work and short of food, I wanted to help. While I gave my time to the Pinellas Genealogy Society and the Largo Public Library, I realized that despite living in the county for nine years, my giving was focused much further from my new home. So, I began looking for a way to help feed people in need. There were many options, but could I trust them to use my donations well?

I had come to know the Pinellas Community Foundation through my work with PGS and felt I could trust PCF to see that money I donated would get where it was needed. So, I began giving monthly donations to the PCF in April 2020 for food relief and other pandemic-related support.

In 2022, as life began to get back to normal, PCF held an Open House, showcasing many of the charitable groups they supported. I was very impressed by the groups' variety, dedication, and creativity. When I got home, I changed the instructions on my donations to "where the most needed," trusting PCF to deploy my donation where they would do the most good at any given time.

READ MORE

PinellasCF.org/DebSchuler

WK Preservation Group Steadfast Toward Environmental Stewardship Goal With \$1.5 Million From Pinellas County

After more than three years of fundraising and thousands of volunteer hours, WK Preservation Group (WKPG) has reached a landmark milestone in its effort to save the West Klosterman Preserve, home to many of Florida's native plants and wildlife, from development and sustain its ecological importance for generations to come. Pinellas County has moved the bar so that WKPG is within reach of the \$3 million required to establish the Preserve.

On Aug. 15, the Pinellas County Commission unanimously approved a resolution to negotiate the purchase of the West Klosterman Preserve from its current owner, Pinellas County Schools, in partnership with WKPG. The County has committed \$1.5 million of Penny for Pinellas funds toward purchase of the 14-acre tract in Tarpon Springs. After the acquisition, the land will be managed as a preserve in perpetuity, effectively doubling upland habitat for rare and endangered species while increasing the natural drainage system.

Tex and Kay Carter are among the founding members of WKPG and remain dedicated to conserving the land. If WKPG reaches its goal, "it's a win-win for the community," Tex says. "Not only will we be preserving something that is irreplaceable, but the money generated from the sale of the property will be going back to support the educational needs of nearly 100,000 students in the Pinellas County school system."

Pinellas Community Foundation's partnership with WKPG broadens PCF's commitment to environmental and conservation causes, strengthening its impact by combining WKPG's passion for preserving natural habitat in Pinellas County with PCF's philanthropic expertise, charitable gift planning resources, and wise counsel.

WKPG will match the County commitment with \$1.5 million donated by private citizens and organizations passionate about preserving environmental treasures. You can partner with PCF to save the West Klosterman Preserve by donating and sharing the #SaveTheWKP story with others interested in environmental preservation.

[READ MORE](https://www.pinellascf.org/WKPMilestone) [PinellasCF.org/WKPMilestone](https://www.pinellascf.org/WKPMilestone)





Giving Humanity a Hand

17755 US Highway 19 N Ste 150
Clearwater FL 33764

NONPROFIT
ORGANIZATION
U.S. POSTAGE
PAID
TAMPA, FL
PERMIT NO 2182



Qualified Charitable Distribution

***ACT NOW To Help Your Community
While Saving on Income Tax Expenses***

QCDs are a great way to support the issues you care about and avoid tax penalties. Transferring directly from an IRA to a qualified charity, such as Pinellas Community Foundation, counts toward your required minimum distribution from your retirement savings account and is not reportable as income.

Beyond QCDs, there are many ways PCF can work with you to design a personalized plan to help your favorite charities, avoid capital gains, bunch donations in specific years, and save on income taxes. When considering your legacy, future generations, and the community you love, please consider Pinellas Community Foundation as your partner.

Contact us for charitable giving with efficient processes, active investment management, and low fees.

EMAIL US Giving@PinellasCF.org

PINELLAS COMMUNITY FOUNDATION IS A 501(c)(3) NONPROFIT ORGANIZATION REGISTERED WITH THE STATE OF FLORIDA. A COPY OF THE OFFICIAL REGISTRATION AND FINANCIAL INFORMATION FOR PINELLAS COMMUNITY FOUNDATION (CH3646) MAY BE OBTAINED FROM THE DIVISION OF CONSUMER SERVICES BY CALLING TOLL-FREE WITHIN THE STATE 1-800-HELP-FLA (435-7352) OR VISITING WWW.FDACS.GOV. REGISTRATION DOES NOT IMPLY ENDORSEMENT, APPROVAL, OR RECOMMENDATION BY THE STATE. YOUR GIFT MAY BE TAX-DEDUCTIBLE; PLEASE CONSULT YOUR TAX PROFESSIONAL TO EXPLORE YOUR BENEFITS.