



SPRING INTO ACTION

WITH PINELLAS COMMUNITY FOUNDATION

Spring 2025 Edition

*Inside: How Local Philanthropy is
Blooming in Pinellas County This Season*



Cover Photo courtesy of Girls Rock St. Pete



A MESSAGE FROM DUGGAN COOLEY, CEO

The Steady Strength of Local Philanthropy

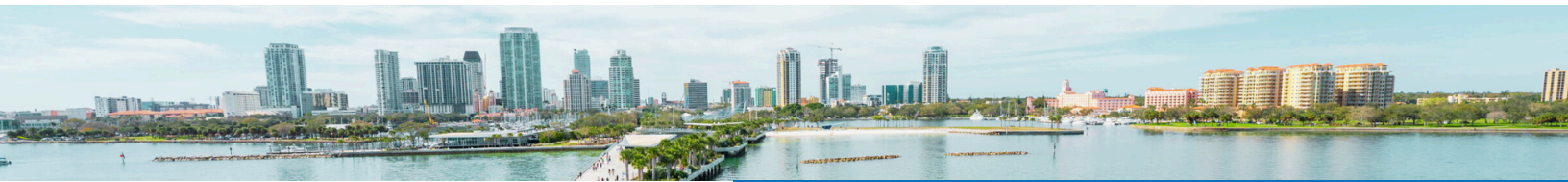
Headlines shift daily, and the world can feel increasingly complex—but local philanthropy remains a reliable cornerstone of community. At PCF, we witness the powerful difference that community-based giving makes every day—creating real, tangible impact in the lives of our neighbors when they need it most.

The Tampa Bay Resiliency Fund is one example of this spirit in action. When hurricanes struck, donors didn't wait for solutions from afar. Instead, they opened their hearts and reached out with helping hands—guided by deep connection and understanding of the diverse experiences that make up our community.

Behind every grant and program is something special: a living network of relationships built on trust and care. These connections bring out the best in our community, allowing us to respond not just quickly, but meaningfully. Our grants aren't just financial transactions—they're expressions of shared commitment and collective compassion.

When you become a PCF Member, you're not just supporting a cause—you're joining a circle of care that ensures we face every challenge with both resources and heart. This isn't only about reacting to today's needs; it's about shaping a stronger, more resilient future—together.

As we step into this season of renewal, we invite you to join us—whether by becoming a member, sharing our story, or making a gift that turns compassion into action.



JOIN PCF MEMBERSHIP

Support the causes you care about and see your impact up close. PCF Membership is a new way to give with purpose and connect with the nonprofits strengthening Pinellas County. With an annual donation of \$500 or more to a core PCF fund, you become part of a community of donors making a real difference—together.

Member Benefits Include:

- Invitations to nonprofit site visits
- Access to the Backstage Bus Tour
- Exclusive PCF events
- Impact Insider newsletter
- Optional public recognition



Make a one-time or recurring gift and join today.
Scan the QR code or visit pinellascf.org/pcfmembership.

PCF GRANTS CALENDAR AT A GLANCE

→ OPERATING GRANTS

2025-26 General Operating Grant Letter of Intent (LOI) will be open **July 14th-August 8th, 2025**.

→ SENIOR CITIZENS GRANTS (SENIOR SUPPORT SERVICES)

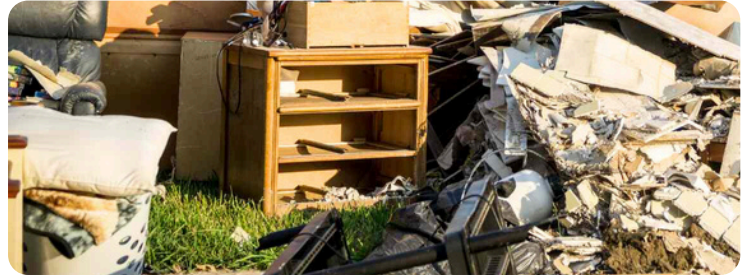
2025-26 SCS Senior Support Services Grant Letter of Intent (LOI) will open **October 1st-14th, 2025**.

→ STAY IN THE KNOW ABOUT UPCOMING GRANTS AND NONPROFIT RESOURCES:

Visit www.pinellascf.org to subscribe to our newsletter and get the latest updates and grant news from PCF.

Tampa Bay Resiliency Fund Helps Pinellas Prepare and Recover

When disaster strikes, recovery is only the beginning. The Tampa Bay Resiliency Fund (TBRF) empowers local nonprofits to respond to emergencies and build long-term systems of support. Since its launch, the fund has granted more than \$985,000 across Tampa Bay—fueling efforts that range from storm recovery to future preparedness.



Its impact can be seen throughout the community, supporting efforts such as:

- Feeding families displaced by hurricanes and severe storms
- Installing generators at key nonprofit service sites to ensure continuity during outages
- Repairing facilities that serve neurodiverse youth, restoring critical support environments
- Providing stability for foster youth aging out of care and facing housing insecurity
- Distributing disaster preparedness kits to families with newborns and young children

Led by Allegany Franciscan Ministries, Foundation for a Healthy St. Petersburg, Pinellas Community Foundation, and United Way Suncoast—with generous donor support—this collaborative effort proves that resilience takes all of us. Learn more at pinellascf.org.

SOWing Seeds of Success: How PCF is Supporting Infinite Potential Learning Academy

In South St. Petersburg, educator Twanna Monroe saw a need—and responded with vision. She launched Infinite Potential Learning Center in 2010 to give children, especially in underserved communities, a strong foundation from infancy through age five. The results were clear: her students consistently outperformed their peers.

“Now, with help from the Social Opportunity Works Fund at Pinellas Community Foundation, the Academy is growing again.”

When families asked for more, Monroe expanded her mission by opening Infinite Potential Learning Academy in 2022—a Black-owned private school serving students ages 3 to 12. A recent \$15,000 grant is enhancing its outdoor play area with new equipment and shaded pavilions, giving students a safe space to learn, play, and connect. The SOW Fund uplifts grassroots leaders like Monroe who are building brighter futures—one child, one classroom, one community at a time.



Thanks to donors like you, the **Social Opportunity Works Fund** continues to support grassroots leaders who are transforming lives through education, equity, and opportunity. Your generosity helps create lasting change—one grant, one leader, and one future at a time. **Scan the QR code to learn more and support the SOW Fund today.**



West Klosterman Preserve Helps Fund Secure 14 Acres of Protected Land

Thanks to community generosity and powerful partnerships, nearly 14 acres of untouched green space in Tarpon Springs are now permanently protected from development.

The West Klosterman Preserve—home to native plants, endangered species, and vital ecosystems—has officially been acquired by Pinellas County and will be incorporated into the adjacent 76-acre Mariner's Point Management Area.

By the Numbers

- 14 acres of land permanently protected
- \$1.5 million raised by the community
- \$3 million total project funded with County support
- Hundreds of donors joined the campaign
- Native habitat preserved for future generations



This marks the successful conclusion of a five-year grassroots effort led by the West Klosterman Preservation Group, which raised \$1.5 million in community donations. With matching support from the county's Penny for Pinellas funds, the full \$3 million goal was reached.

Pinellas Community Foundation proudly served as the fundholder, coordinating philanthropic support and helping bring this vision to life. The preserve will remain a protected conservation area—an inspiring example of what's possible when neighbors, nonprofits, and local government unite to safeguard our region's natural treasures.

PCF GRANT NEWS & IMPACT



PCF Round II of Multi-Year Operating Grants Sustaining Nonprofits That Strengthen Our Community

At Pinellas Community Foundation, we believe strong nonprofits are the heart of a thriving community. That's why we're continuing our commitment to multi-year general operating support—funding that brings stability, reduces administrative burden, and allows organizations to focus on their mission.

In Round II of our Operating Grants, **72 local nonprofits are receiving flexible, two-year funding** tailored to the size of their programs in Pinellas County. This approach ensures equity, meeting organizations where they are and supporting the impact they're making in our community.

By shifting to a two-year cycle, we're not only investing in programs—we're investing in people and long-term change. Grantees are already using this support to expand food access, provide mental health services, create safe spaces for youth, and more. In the pages ahead, we're proud to share some of their stories.

Investing in Potential: A Student's Journey with the Shirley Proctor Puller Foundation

When a high school student joined the Shirley Proctor Puller Foundation's M.A.S.T.R. Plan Program—a program built around a 'literacy plus STEAM' curriculum—he had one goal: to become a chef. But with encouragement from SPPF's CEO, Ms. Bridgette, he began exploring new paths. Through patient guidance and career exploration, he discovered a passion for entrepreneurship that could support his dream of owning a restaurant.



That spark led him to join Future Business Leaders of America, where he's now preparing for state competitions—and a prestigious summer program at Columbia University.

This transformation was made possible in part by a two-year operating grant from Pinellas Community Foundation, helping SPPF continue its mission to close the achievement gap and prepare students for success.

With the right support, today's learners become tomorrow's leaders.

Creating Belonging: Girls Rock St. Pete and PCF Help Youth Find Their Voice

When Haley arrived at Girls Rock St. Pete, she had already faced more than most her age—expelled from school by nine and guarding herself with tough behavior. But at Power Week, everything shifted. For the first time, she was celebrated just as she was. Through drumming, connection, and community, Haley found calm, confidence, and belonging.



With support from Pinellas Community Foundation, Girls Rock St. Pete expanded its reach—welcoming more youth, deepening partnerships, and growing a movement rooted in inclusion and creativity. This year's Power Week broke attendance records, increased donations by 33%, and sparked new collaborations across the city. With 100% of campers reporting greater confidence and nearly all parents seeing positive change, the message is clear: when young people feel seen, they thrive.

Thanks to donors like you, Pinellas Community Foundation is able to fund programs that change lives—like Haley's. Your support helps youth across our community feel seen, celebrated, and empowered to reach their full potential. **Scan the QR code to support the PCF grants program that makes stories like Haley's possible.**

PCF IN THE NEWS

Our work continues to gain recognition across the region, with recent media features highlighting the generosity of our partners and the impact of our community-focused initiatives.

Here's a look at some of the stories making headlines:

Gronk Nation Supports Community Resilience

On March 24, 2025, four-time Super Bowl Champion Rob Gronkowski and the Gronk Nation Youth Foundation presented a \$315,000 donation to PCF in support of the Tampa Bay Resiliency Fund. The gift will strengthen local disaster relief efforts, mental health services, and economic recovery programs across the region. Joined by key community partners at the check presentation, Gronkowski shared, "I will always have a special place in my heart for Tampa Bay... I know our community will be even stronger!" This generous contribution reflects Gronk Nation's commitment to helping youth and families overcome challenges through fitness, education, and community support.

Duggan Cooley Speaks on Disaster Recovery with Radio St. Pete

PCF CEO, Duggan Cooley, recently joined Radio St. Pete to discuss the ongoing need for disaster recovery and the essential role of local nonprofits. He emphasized the long-term impact of hurricanes on our community and spotlighted organizations like St. Petersburg Free Clinic, which provide food, healthcare, and housing to those most affected. Cooley also shared how the We Are St. Pete Fund, a partnership with the City of St. Petersburg, is providing direct relief to residents, small businesses, and city employees recovering from recent storms. The message was clear: community support doesn't end when the storm passes.

READ THE FULL STORIES—AND
EXPLORE MORE PCF NEWS AND
FEATURES—ON OUR WEBSITE.
SCAN THE QR CODE TO DIVE IN.





Thank You for Being Part of the PCF Community

Your support uplifts lives, strengthens nonprofits, and creates lasting change across Pinellas County. Looking for more ways to connect and make an impact? Here are four ways to stay involved with PCF:

01

SIGN-UP FOR OUR COMMUNITY MATTERS NEWSLETTER

Stay informed and inspired with Community Matters, our monthly newsletter featuring impact stories, local needs, and ways to get involved. Visit pinellascf.org or scan the QR code to subscribe.



02

LET'S GET SOCIAL

Want to stay connected with what's happening in our community? Follow PCF on social media for the latest news, nonprofit partner events, and inspiring updates. Visit linktr.ee/pinellascf or scan the QR code to follow along.



03

EXPLORE THE PCF GIVING HUB

Looking to support causes you care about? Visit our website and click "Donate Now" to browse the Giving Hub—your one-stop place to explore local needs, discover community nonprofits, and make a direct impact. Scan the QR code to get started.



04

START A FUND AT PCF

Want to make a lasting impact? PCF makes it easy to support the causes you care about through personalized, flexible fund options. Scan the QR code to explore fund options and take the first step.



05

REACH OUT ANYTIME

Email: info@pinellascf.org

Call: 727-531-0058

Visit: www.pinellascf.org

Stop by: 17755 US Highway 19 N, Suite 150, Clearwater, FL 33764



Pinellas Community Foundation
17755 US Highway 19 N, Suite 150
Clearwater, FL 33764



Your Impact Starts Here

Support the causes that matter most to you, become a PCF Member, or explore the Giving Hub to give with purpose.

Every gift fuels real change in Pinellas County—one story, one act of kindness, one community at a time.



**SCAN THE
QR CODE
TO GET
STARTED**